



DATPROF

DATA MASKING BEST PRACTICES

TOOLS FOR A SUCCESSFUL START

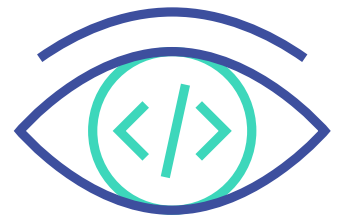
DATA INSIGHT

Know where your (privacy sensitive) data is stored. In which environments, systems, databases, tables, rows is this data present and who has access to this data?



SPECIFIC DATA

At least do something with date of birth and postal area. Research shows that if this data isn't masked, you're pretty identifiable.



CHARACTERISTICS

To keep the data suitable for proper software testing, you have to maintain the characteristics. Pollution for example, has to be present in your test data set for quality assurance.



USE SYNTHETIC DATA

Don't stare blind at only masking rules. Use synthetically generated data to enrich your masked data. Big advantage: synthetic data is compliant by default.



CONSISTENCY

Make sure that all personally identifiable information in every database, system and application is masked the same way as your master test data. In other words: keep your data consistent.

